



وايت موندی تصميمات داخليه & تجهيزات

**WhiteMonde**

INTERIOR DESIGNS & FITOUTS

# Contents overview



**03**  
About us

**04**  
Our values

**05**  
Our strengths

**06**  
Publication

**07**  
Our history

**08**  
Our clients

**09**  
Our projects

**31**  
Testimonials

**32**  
Contact





# About us

## Award winning interior design and fitout company In Dubai

Welcome to the haven of interior designing where innovation meets creativity in the most luxurious way. With our expertise of over a decade in the field of interior designing, we at White Monde promise you an enthralling experience like never before. Be it the comfort of your home or the arena of an office, a space that reflects the true essence of your being is something that is crucial for the well being of the people present in that space. Being one of the best interior fit out companies in Dubai we provide premium quality interior designing work to our clients. Our vision is to deliver the most lavish quality work in the most inexpensive price. Your office or home is a place where you spend most of your time, our job as the highly dedicated interior fit out company in Dubai is to simply let it reflect the essence of your being. We provide most alluring designs and creative ideas that enhance the ambience of the entire space. We also understand the importance of an eco-friendly space, thus our work reflects responsible environment conscious solutions. Come join us, and become a part of our exciting journey in transforming every dream into a delightful reality!



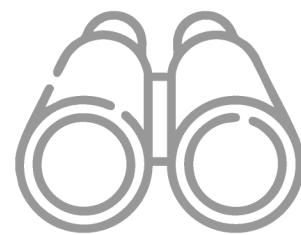


## Our Mission

Our mission is to make our mark in the interior space as the most quality driven design company, paving the way for excellence with the help of our teams of most creative and innovative designers who help to fabricate the most captivating ideas making us the leading interior designing and management experts in Dubai!

## Our Goal

We are driven to turn our clients' vision into the most stunning reality and in doing so we provide them the experience of a lifetime! Also we provide them significant improvement in criteria that underline their creative issues. Our objective is to meet the requirements of our clients and provide them with the most luxurious solutions, helping them reach their aesthetic best!



## Our Vision

Our vision is to impart extravagant interior design services in both interiors and architectural fields with the scope of We provide services tailored to the requirements of our valued clients in the hospitality, residential, corporate, retail sector focused solely on providing the most exquisite results!



## Our Values

At the core of everything we do lies a deep commitment to creativity, integrity, and excellence. We believe that design is not just about aesthetics it's about crafting meaningful experiences. Our values guide our every decision and interaction:

- Creativity with Purpose: We strive to bring fresh, bold, and innovative ideas that elevate every space we design.
- Client-Centric Approach: We value our clients' vision and work collaboratively to turn their aspirations into tangible, luxurious realities.
- Excellence in Execution: We maintain the highest standards in every project, ensuring flawless execution and timeless quality.
- Sustainability & Responsibility: We are committed to environmentally responsible practices that respect both nature and the future.
- Trust & Transparency: We build lasting relationships through honest communication, reliability, and mutual respect.

Our values are the foundation of our reputation as one of Dubai's leading interior design and management firms.



# Our Strengths

At the heart of our success lies a powerful combination of experience, innovation, and commitment to excellence. These core strengths empower us to deliver exceptional results across every project we undertake:



## 10 Years of Experience

We are industry leaders in designing energy-efficient and environmentally responsible spaces. With a focus on sustainability, we offer LEED certification for all projects exceeding 2,000 sqm—boosting productivity while preserving the planet.



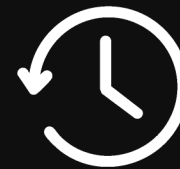
## Sustainable Solutions

We are industry leaders in designing energy-efficient and environmentally responsible spaces. With a focus on sustainability, we offer LEED certification for all projects exceeding 2,000 sqm—boosting productivity while preserving the planet.



## Uncompromised Product Quality

Every project we execute adheres to international standards, including ISO 9001:2015 for Quality and ISO 45001:2018 for Occupational Health and Safety. Quality is not just a promise—it's a guarantee.



## On-Time Delivery

With precise project planning and milestone tracking by our expert Project Managers, we ensure timely delivery by anticipating dependencies and resolving bottlenecks before they arise.



## Passionate Execution

Our dedicated team thrives on solving challenges. With rich expertise and a results-driven mindset, we tackle complexities with confidence and deliver outcomes that exceed expectations.



# Publication

## About the Fit-Out Powerlist 2025

The Fit-Out Powerlist celebrates innovation, resilience, and leadership in the design and fit-out industry. This edition showcases the firms and individuals driving excellence in interiors across the Middle East, setting benchmarks for creativity and delivery.



**INDUSTRY EXPERIENCE**  
OVER  
15 YEARS

**CURRENTLY WORKING ON**  
Luxury retail, hospitality, and office fit-outs across the UAE.

**FUTURE PLANS**  
Expanding into Saudi Arabia and other MENA countries with turnkey interior services.

### TIMELINE HIGHLIGHTS

**2021**

Completed 400+ office projects across the UAE

**2022**

Launched in-house joinery unit and adopted BIM workflows

**2023**

Delivered multiple five-star hospitality fit-out projects

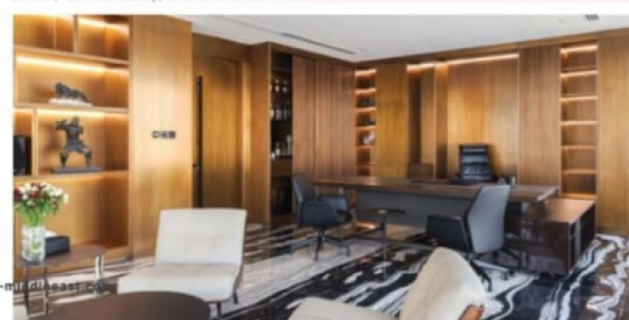
**2024**

Completed luxury tech headquarters in Dubai

**2025**

Entering the Saudi market with dedicated design-build operations

The Blue Bridge office in Downtown Dubai exemplifies a perfect fusion of modern sophistication, functionality, and innovation.



23

## WHITEMONDE INTERIOR DESIGN AND FITOUT

**MOHAMED BASHEER**  
MANAGING DIRECTOR

TRUE INNOVATION IN FIT-OUT LIES IN THE FUSION OF DETAIL, DESIGN, AND DELIVERY.

**W**hitemonde Interior Design and Fitout is a leading design-and-build firm based in Dubai, delivering bespoke interior solutions across commercial, hospitality, retail, and residential sectors. Known for its detail-driven approach, Whitemonde merges design excellence with seamless project execution.

Whitemonde has a proven track record of delivering stand-out projects—from boutique hotels and flagship retail stores to premium office spaces and

custom F&B interiors. Its end-to-end capabilities, including creative design, in-house joinery, MEP coordination, and expert project management, guarantee precision, consistency, and quality throughout every phase of execution.

Embracing sustainability and innovation, Whitemonde has integrated advanced technologies such as Building Information Modeling (BIM) into its processes to streamline operations, reduce waste, and enhance coordination across disciplines. This forward-thinking approach not only boosts efficiency and accuracy but also supports the firm's commitment to environmentally responsible practices.

At the heart of Whitemonde's success is its client-centric philosophy—every space is thoughtfully designed to embody the client's brand, vision, and operational needs. Whether it's a luxury retail environment or a modern corporate office, each project is tailored to deliver both aesthetic impact and functional performance.

Looking ahead, Whitemonde is set to expand its footprint into Saudi Arabia and the wider MENA region. With a strong portfolio and a reputation for excellence, the firm aims to play a key role in shaping the region's dynamic built environment. Its upcoming ventures will bring Whitemonde's signature design-build expertise to major regional developments, positioning the company as a preferred partner for high-end, turnkey interior solutions across emerging markets. •





# Our History

## 2016 Foundation of Whitemonde

Where vision met execution

Whitemonde Interior Designs & Fitouts was established with a clear mission — to redefine interior spaces with creative excellence and precision. With a focus on quality craftsmanship and client-centric solutions, the company began making its mark in Dubai's competitive design industry.

## 2019 Expansion into Joinery & Furniture

Adding depth to design through in-house manufacturing

Recognizing the importance of customized craftsmanship, Whitemonde launched its own joinery and furniture division. This move empowered the team to deliver fully integrated design-build solutions with complete quality control and unmatched detailing.



## 2023 Design Studio Opens in Business Bay

The heart of creativity beats in the city center

To better serve its growing clientele, Whitemonde inaugurated its full-fledged design studio in Business Bay, Dubai. This strategic location places the team at the center of innovation and business, facilitating closer collaborations and bolder ideas.



## 2024 We Did It! Gold at the MUSE Design Awards!

Recognized for creativity in commercial interiors

Whitemonde Interiors was honored with the Gold Award in the Interior Design – Office category at the MUSE Design Awards. The winning project was a high-end office design and build in Downtown Dubai, reflecting our passion for premium commercial interiors.



## Present 730+ Projects Completed 19 Ongoing

Relentless dedication to commercial excellence

With over 730 completed projects and 19 currently underway, Whitemonde continues to focus on high impact commercial office interiors across Dubai delivering environments that inspire productivity and reflect each client's unique brand identity.

# Our Clients

OMNIYAT



نخيل  
NAKHEEL



Bh.



THE GELATIST  
ECCELLENZA ITALIANA

SULZER



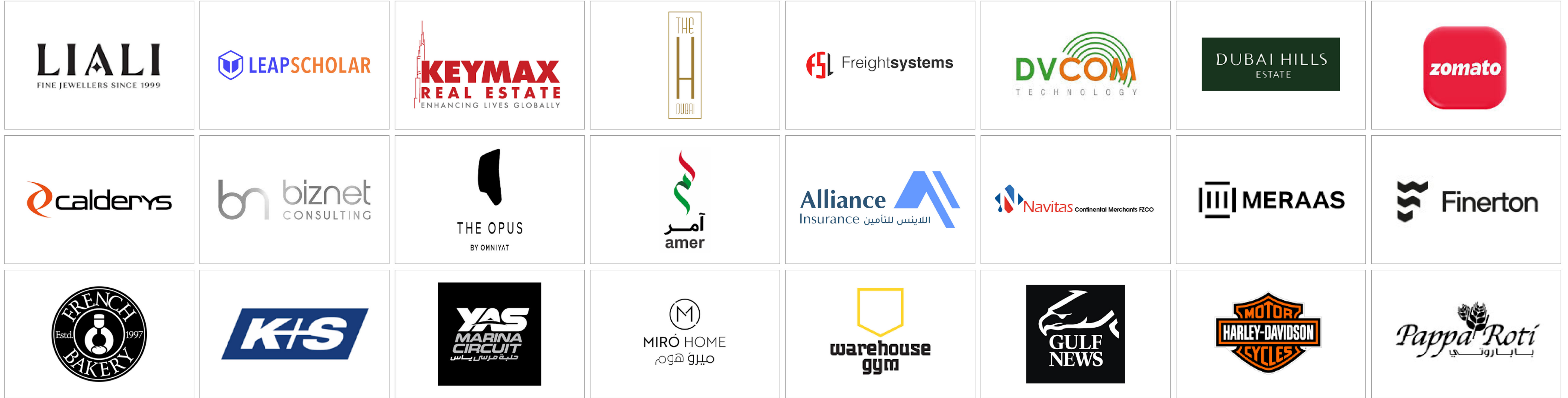
تعاونية الشارقة  
SHARJAH CO-OP



four











## Bluebridge General Contracting

### Project Highlights

- Size: 11,200 sq ft
- One By Omnyat Building
- Project completed - 2024
- Project – office design and fitout
- Location: Business Bay, Dubai
- 82 working days
- Key Features: Client engagement spaces, feasibility studies and test fits, bespoke joinery
- Authority approvals

### The Brief

Bluebridge General Contracting, one of the leading energy traders in the Middle East, sought to consolidate their Business Bay headquarters into a cohesive and modern workplace. Occupying an entire floor, the office needed to accommodate ample desking and collaborative spaces for the team, as well as private offices for the executive leadership. An impressive, client-facing entrance was also a key requirement, providing a welcoming lead-in to both formal and entertainment areas.

### What We Did

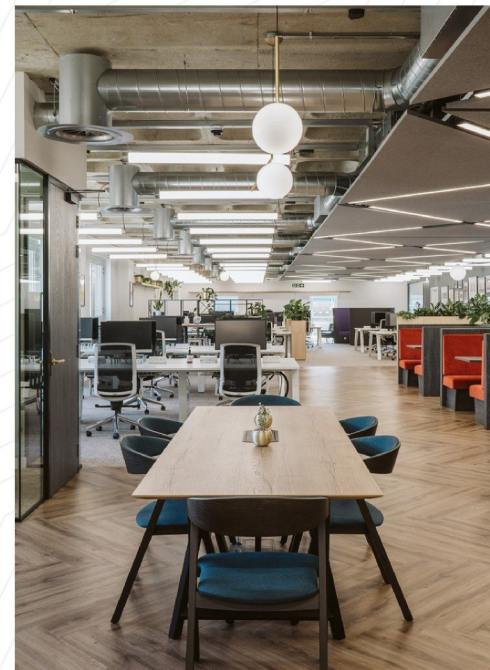
In close collaboration with Bluebridge General Contracting, our design team crafted a functional yet striking workspace. The office features a sleek reception area with branded signage, seamlessly leading into a lounge and breakout entertainment zone. Bordering this central area are client-facing meeting rooms, open workstation zones, manager cabins, and collaborative rooms—all enhanced with Crittall-style glazing and bespoke joinery slats, adding a warm, natural texture to the contemporary aesthetic.

Executive offices are strategically placed to overlook the open-plan area, fostering connectivity between leadership and staff. The space benefits from abundant natural light through panoramic windows. Toward the rear, we designed specialized technical lab spaces for watch repairs, spare parts management, cleaning, polishing, and quality control.

### The Results

The team at Bluebridge General Contracting is highly impressed with their new office. The impactful, client-facing entrance leaves a strong first impression, while the multifunctional workspace supports both focus and collaboration, enabling the team to perform at their best.





Confidential

## Project Highlights

- 8,750 sq ft
- Power-enabled booths
- Custom lounge & shelving
- Acoustic finishes
- Greenery integration
- 52-day delivery

## The Brief

NexaCore Consulting (Demo Placeholder Name) envisioned a transformation of their office into a modern, people-focused environment. The aim was to create zones that support both teamwork and individual focus—bringing in comfort, flexibility, and a fresh design language that reflects a forward-looking culture.

## What We Did

We designed a workplace that seamlessly merges comfort, style, and functionality. The layout was carefully planned to accommodate different work modes—ranging from focused solo tasks to collaborative team discussions. At the heart of the design are custom-built booths with integrated power outlets, ideal for informal meetings or individual use. Soft seating arrangements and open shelving in the lounge area provide a homely yet professional vibe, encouraging relaxation and creative thinking.

To elevate the user experience, we introduced biophilic elements—integrated planters and natural textures that enhance air quality and visual calm. Exposed ceiling structures and layered lighting were incorporated to give the space a sense of openness and depth, while acoustic-friendly materials help reduce noise and improve concentration. Every zone was purposefully created to support workflow, elevate comfort, and reflect a modern, forward-thinking office culture.

## The Results

The reimagined space now supports a range of working styles in a visually cohesive and energizing environment. Employees benefit from improved comfort and collaboration, while the thoughtful design helps create a strong first impression for guests and clients. (Please note: all names and references used are for demo presentation only.)





## Salience Consulting

### Project Highlights

- 10,150 sq ft
- JLT
- 53 Working days
- Collaborative meeting
- Bespoke joinery



### The Brief

Salience Consulting, a strategic business and technology consultancy based in Dubai, sought a workspace transformation that reflects their forward-thinking approach while maintaining a sense of professionalism and functionality. The objective was to create a collaborative, efficient environment that could accommodate their growing team and evolving work culture. Located in a prime business district, the space needed to enhance their brand presence and provide an inspiring environment for both clients and staff.

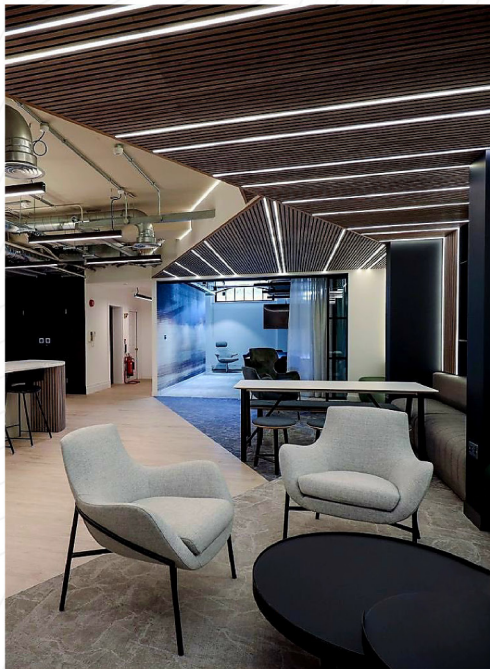
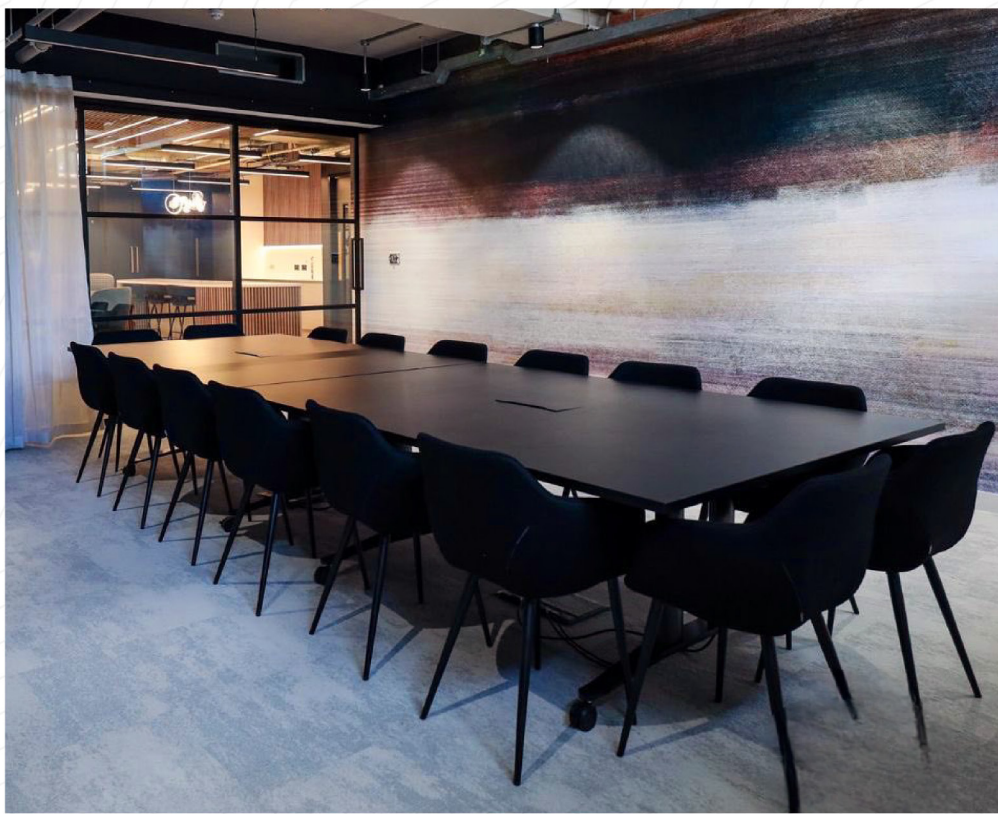
### What We Did

Whitemonde Interiors undertook a full design and fit-out project tailored to Salience Consulting's specific needs. Our team worked closely with the client to understand their workflow and organizational dynamics, ensuring that the layout maximized productivity and fostered collaboration. From space planning and custom joinery to lighting, acoustics, and branding elements, every detail was meticulously handled. The project was completed within the agreed timeframe and budget, with minimal disruption to the client's operations.

### The Results

The completed office now embodies Salience Consulting's brand values—smart, modern, and adaptable. The design features an open workspace layout with strategically placed meeting rooms, collaborative zones, and a sleek breakout area for informal discussions. Sophisticated finishes and subtle brand accents create a professional yet welcoming atmosphere. The upgraded office supports both focused work and team interaction, helping to boost employee morale and impress visiting clients.





Confidential

## Project Highlights

- 7,800 sq ft
- Executive meeting rooms
- High-performance breakout zone
- Linear wood ceiling treatments
- Integrated AV & power hubs
- Delivered in 60 working days

## The Brief

Stratosphere Group (Used for Demo Purposes Only) aimed to create a high-impact workspace that merges sophistication with smart functionality. The design had to accommodate both formal meetings and informal gatherings, with a distinctive aesthetic that reflects innovation, leadership, and attention to detail.

## What We Did

We crafted a bold and refined environment through the use of moody tones, dramatic lighting, and premium material finishes. The centerpiece is a multifunctional lounge space layered with linear timber ceiling panels, concealed lighting, and integrated AV elements—designed for both casual meet-ups and content-driven presentations.

Private meeting rooms feature rich textures, acoustic wall panels, and ergonomic furniture, creating focused zones for decision-making and client engagements. Throughout the space, exposed structural elements are intentionally balanced with curated lighting and sleek furniture choices to evoke a tech-forward, executive vibe. Functional details like hidden cable management, built-in charging, and ambient backlighting complete the experience.

## The Results

The final space delivers a powerful blend of style and performance. With its immersive lighting, curated finishes, and versatile spatial flow, the workplace now feels both exclusive and highly usable—perfectly aligned with a fast-moving, design-conscious organization. (Company name is for demo use only and can be customized for the client.)





## Miro Home

### Project Highlights

- 6,150 sqft head office
- City Center Mirdif
- 60 working days
- Furniture & other sofa fabric supply
- Client experience suite



### The Brief

Miro Home, known for its elegant home décor and curated lifestyle pieces, approached us with a clear yet heartfelt vision: to create a space that truly reflects the warmth and sophistication of their brand. Located in City Centre Mirdif, one of Dubai's busiest malls, the space needed to stand out—while still feeling like home to every customer who walked in. From the very first meeting, their passion for detail and design was evident. They wanted a store that didn't just display their products, but one that told their story—a calming, beautifully arranged space where customers could imagine those same items in their own homes. As a team, we were inspired by their authenticity and dedication to creating meaningful spaces, and we knew this project was about more than just shelves and lighting—it was about creating an experience.

### What We Did

We worked closely with the Miro Home team to bring that experience to life. Every design element—from the natural-toned palette to the soft, ambient lighting—was chosen to reflect warmth and simplicity. We crafted custom joinery for clean product displays and ensured a layout that encouraged flow, comfort, and exploration. It was a fast-track fitout, so coordination was key. Our team worked around the clock to ensure all mall approvals, timelines, and detailing were handled with precision. We kept their brand identity at the core, while also considering foot traffic, visual merchandising, and practical day-to-day operations.

### The Results

The result is a serene, thoughtfully curated retail space that invites customers in and makes them feel at ease. The soft finishes, carefully designed display units, and welcoming entrance all come together to create a store that feels like Miro Home. From day one, the space began attracting footfall and positive feedback, affirming the success of a design that's not only beautiful—but meaningful. It's a project we're proud of, and one that reflects the shared vision between client and designer.





## Inter Commercial

### Project Highlights

- 2,000 sqft head office
- Binary By omniyat, Business bay
- 45 working days
- Design strategy report
- Client experience suite

### The Brief

Inter Commercial are Dubai property developers with over 10 years of experience in both commercial and residential property development. They were interested in our Built to Lease programme to build a space that would fit the building's profile and attract prospective tenants from the creative and technology industries. During design meetings, the White-monde team held brainstorming sessions where we inspired Inter commercial Group with pictures from our previous projects in those industries.

### What We Did

The office was developed around the concept as a 'plug and play' space, providing flexibility with agile work zones. This was a fast-track project, relying on adept scheduling and organisation to achieve a prompt delivery. Our team maintained an economical approach to designing the space, ensuring that furnishings were sophisticated whilst allowing a 'blank canvas' look and feel. The space is designed with sustainability at its core and embodies all the elements of a future-proofed workplace. This cutting-edge office space offers a modern environment ready to meet the demands of today's workforce.

### The Results

The office features large desk spaces, a meeting room, teapoint, waiting room, reception and break-out area. The colour palette is neutral with flecks of pastels throughout, providing an adaptable space for any prospective tenant. The sleek, clean finishes and practicality of the design will likely ensure a speedy occupation for Intercom group.





SVT

## Project Highlights

- 3,190 sq ft
- JLT
- 45 Working days
- Client engagement spaces
- Feasibility studies and test fits
- Bespoke joinery

## The Brief

Winstone Technology are a family run, Dubai audio and sound experience specialist. The brief was to create a modern workplace for their team alongside unique, impressive customer experience spaces for product demonstrations. The workplace needed to celebrate winstone 5-year heritage and demonstrate their cutting-edge capabilities. It had to enable agile, collaborative working and meetings, alongside individual, focused work.

## What We Did

Through workplace consultancy services we created test fits, budgets and feasibility studies to enable Sennheiser to make the decision to relocate. The arrival avenue creates a wow factor with floor to ceiling images of global superstars using Winstone professional audio equipment. Custom joinery pieces with interchangeable product placement allow customisation for client demos. This leads into the breakout area offering space for the team to recharge and houses a large back kitchen for hospitality preparation.

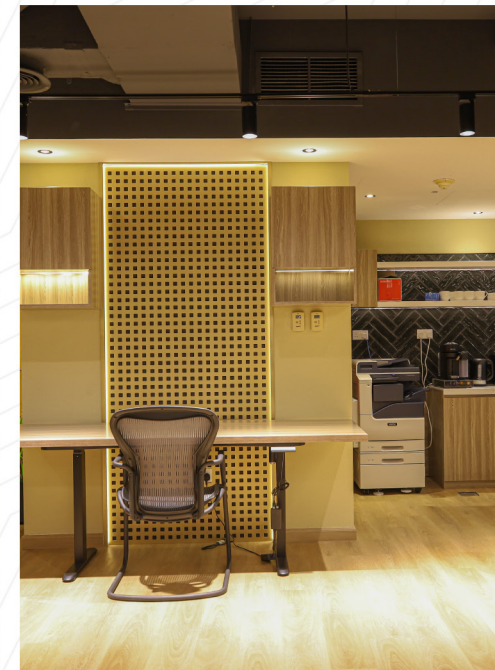
Our designers worked closely with department heads to understand the technical needs of the customer facing spaces. The concept of a large meeting space, with a bi-fold partition to split the space into two smaller spaces, was created. This offers flexible options for training and client engagement and for internal all hands meets.

The open plan area includes high quality desk positions, internal meeting rooms, collaboration tables and booths for informal meetings. Biophilic design brings a living tree into the middle of the touch down table and natural light floods the space to boost employee wellbeing.

## The Results

Winstone new workplace is a true masterpiece, every area has been meticulously thought through. From the beautiful furniture to the strong sense of brand throughout.





Wisefield Law

## Project Highlights

- 8,050 sq ft
- JBC – 3
- Project completed – 2023
- 72 working days
- Turnkey design and build
- Flexible, collaborative workspaces
- Premium breakout area



## The Brief

Wisefield Law, a leading UAE firm with 10+ years of GCC experience, entrusted us again to design their new Dubai office, continuing our strong partnership.

The brief called for flexible workspaces and a spacious lounge, aiming to reflect their brand in a modern, collaborative setting.

## What We Did

At the entrance we designed a client facing reception area with a suite of flexible meeting spaces including adjoining meeting rooms with bi-fold partitions allowing the spaces to be used for larger presentations.

In the main workspace we introduced a central collaboration table, meeting booths, additional meeting spaces alongside focused desk areas. A bay of lockers makes storage easy and enables the hot-desking approach to work seamlessly. The breakout area has a full-size kitchen with multiple hot/cold zip taps, a proper coffee machine. The lounge area has soft seating, comfy booths and a wall length cushioned bench. The area is decorated with impressive wall art of local landmarks such as the iconic Clifton suspension bridge.

Using premium furniture and custom upholstery the design incorporates the wisefield law brand colours throughout. The quality of the furniture choices ensures the team are working comfortably all day.

## The Results

The new workspace supports Wisefield law team with flexible design, collaborative zones, and focused desk areas to enhance productivity.

Contract, Project Management and Site Management; it was all excellent. People and process; all excellent. A flexible collaborative approach and the team were very thoughtful and nice to deal with."

**Director of Operations, Mr. Moustafa**

★★★★★





## Project Highlights

- 2,150 sq ft
- Business bay
- 30 working days
- Multi-brand integration
- A growing team of 120+
- Flexible space with room for growth



## The Brief

STI is a GCC leading group of companies at the forefront of accelerating transformation in their industries.

STI needed to create a new, flagship Dubai headquarters to compliment their continued growth and support their team as they continue to grow their market share. The brief included a biophilic focus on providing natural light for the team alongside creating flexibility, space for ongoing growth and harmonious integration of their portfolio of brands.

## What We Did

Through a process of early engagement, we provided workplace consultancy services to STI. Assisting them with prospective building appraisals and test fits ahead of them securing a space.

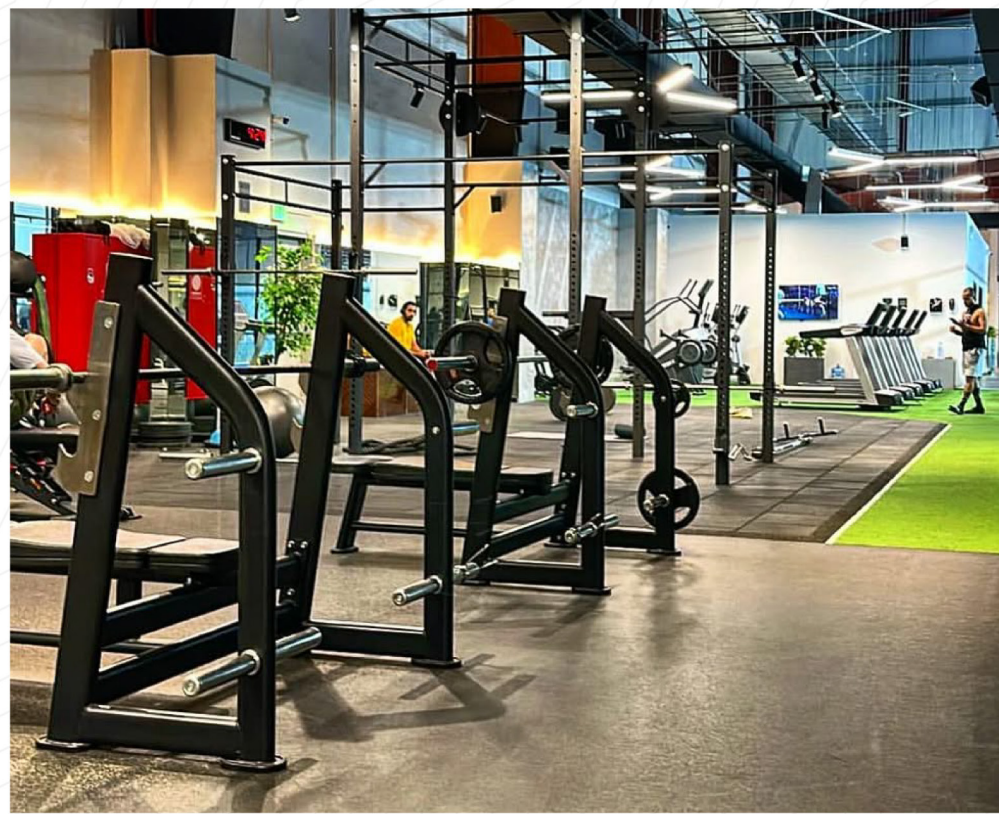
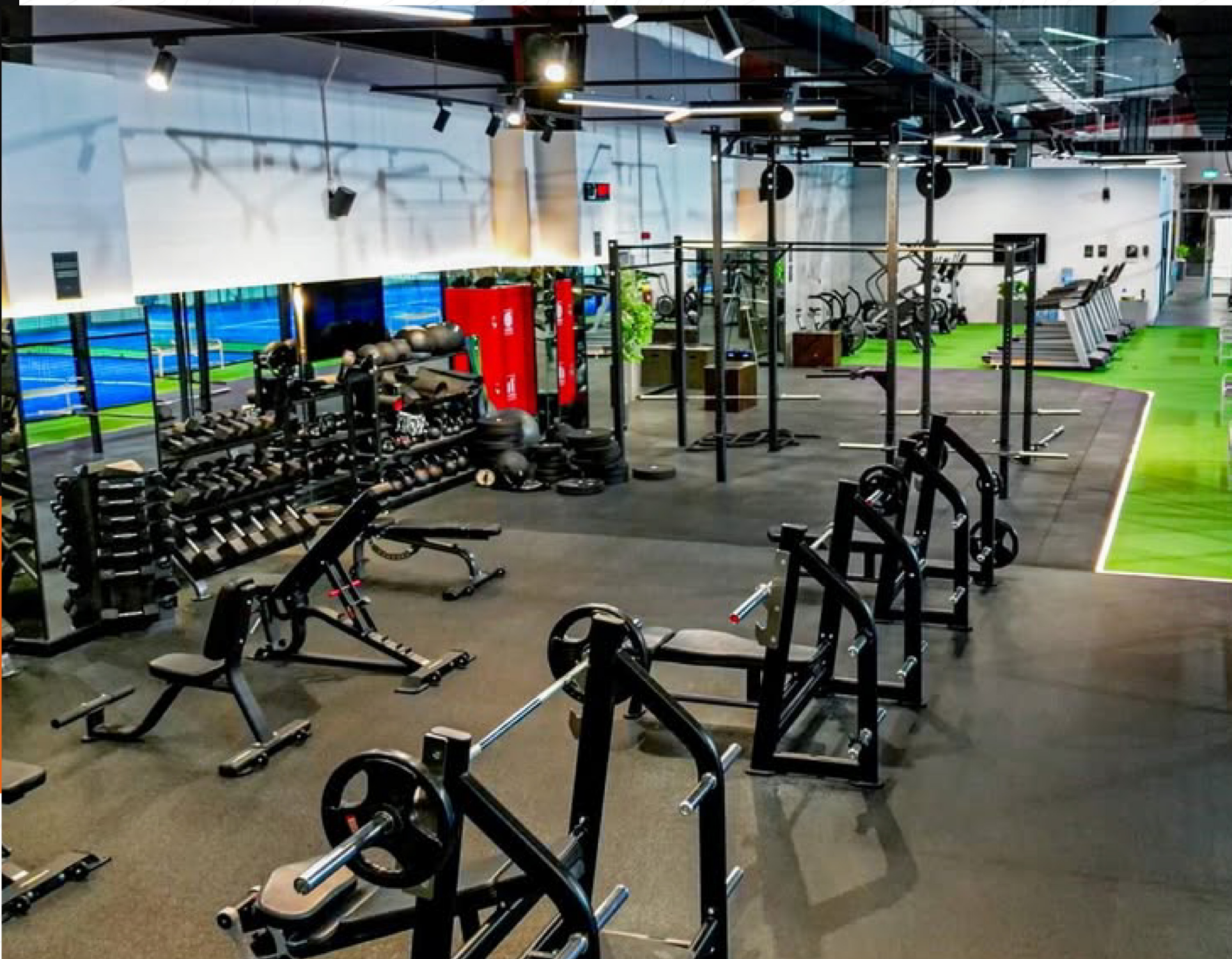
Our turnkey design and build solution for their new 2,000 sqft workplace at international incorporated flexible meeting spaces themed on STI's world-famous brands.

We created an executive board room with thoughtful, brand coloured acoustic paneling to level the sound in the large room. The new breakout area provides space for the team to recharge and refuel. The main open-plan workspace offers plenty of space for focused work with collaboration tables for teamwork.

## The Results

STI's new workplace supports their flexible ways of working in a space that encourages concentration and productivity. Their brands are woven seamlessly throughout the space using their brand colour palette. There is plenty of usable space available for the continued growth of this influential company.





## Pedel Health Club

### Project Highlights

- 14,570 sqft head office
- Sharjah
- 90 working days
- Design strategy report

### The Brief

Platform Health club in Rahmania mall, Sharjah, is renowned for its commitment to cutting-edge fitness experiences, café & pedal experience. Now it has set a new benchmark by becoming the UAE to install Escape Fitness.

### What We Did

To create a high-performing, engaging training zone, the project began with detailed space planning to optimise flow, motivation, and functionality—making it a space people want to train in. Platform Healthclub Fitness provided a custom wall-based frame with branded weights and functional equipment, built at Escape's Technologies Centre and positioned to maximise space.

Our team collaborated closely with Platform to ensure the space met brand standards and supported both group workouts and individual sessions. The final design balances energy, practicality, and aesthetics to help members reach their fitness goals.

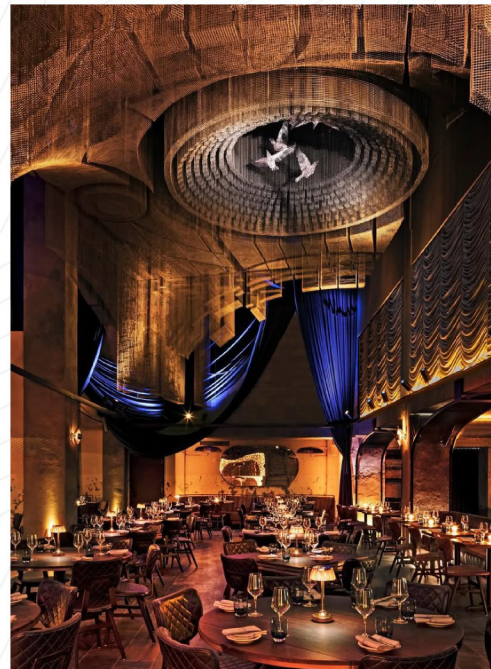
### The Results

We designed and delivered a bespoke training environment that included:

- Space Planning Expertise: Strategic design that optimises the training potential of the space available, creating an environment best suited to small group and one-to-one training.
- Custom Wall-Based Octagon HIT Hub: Bespoke training frame that incorporates versatile functional storage, a Boxing Training Bag, battle rope attachments, pull-up bars and a squat rack.

From concept to completion in just a few months whitemonde designed an open, stylish, multi-purpose area that maximises functionality. The premium feel and bespoke, branded design delivers a welcoming, inviting vibe that encourages members old and new to engage and to want to work out time and time again.





## Luxury Hospitality

### Project Highlights

- 3,190 sq ft
- JLT
- 50 Working days
- Client engagement spaces
- Feasibility studies and test fits
- Bespoke joinery

### The Brief

The client envisioned a luxurious dining experience that seamlessly blends ambiance, comfort, and cultural storytelling. The focus was on creating a bold yet elegant setting with rich textures, warm lighting, and immersive decor.

### What We Did

We developed a high-end hospitality interior that merges culture with class. From thematic walls to layered lighting, every design choice elevated the guest journey. We tailored multiple seating formats—communal, booth, and bar—to enhance versatility. Material selection and finishing were meticulously curated to exude sophistication while maintaining comfort and durability.

### The Results

The final space is a seamless blend of sophistication and culture, delivering a high-end dining experience that captivates guests from the moment they enter. The rich materials, ambient lighting, and artistic elements elevate the atmosphere while supporting functional dining flow.

This elegant and immersive design has not only enhanced the restaurant's brand image but also created a memorable destination that keeps guests returning.





## Project Highlights

- 3000 sq ft
- DIFC
- 60 Working days
- Client engagement spaces
- Collaborative meeting
- Bespoke joinery

## The Brief

Alpina is a prestigious international agency for classical musicians. Situated in DIFC, Dubai. Their lease in Islington was coming to an end and an internal survey concluded that a central UAE location was more important than a much larger office space. The aim was for this location to become a contemporary hub for artists and staff alike; to provide more space for growth and to create a stronger brand identity. Following Alpinas own workplace consultancy, our team developed the design around our client's desire for a more collaborative workspace.

## What We Did

With careful planning, we constructed a schedule that ensured the project ran on time and to budget. Our team created a design that was sympathetic to the building and considered the existing mechanics. To ensure the space was ready for business from day one, we ran an induction to familiarise Intermusica staff with their new office and provided introductory booklets containing further information about the local area.

## The Results

Alpina now has a high-class meeting and entertainment space that they can show off to clients. The office is open plan with a stylish teapoint and a large, sophisticated boardroom that can open up to create an events space. A central section of focus pods and booths allow for flexible and agile work away from the adjacent traditional desk environment. The office provides the opportunity for collaboration across different departments, which is integral to Intermusica's ethos and culture.





**Biznet Last**

## Project Highlights

- 8,750 sq ft
- JLT
- 70 Working days
- Collaborative meeting
- Bespoke joinery



## The Brief

Biznet Consulting, a dynamic management consultancy firm, approached us with a vision to reimagine their workspace in Oud Metha. Their primary objective was to create a versatile and future-ready environment that supports both client-facing operations and internal team collaboration. The space needed to reflect their growth, enhance brand identity, and encourage productivity within a sleek, functional design framework.

## What We Did

Whitemonde Interiors collaborated closely with Biznet's leadership and operations team to capture their workflow needs and brand ethos. From the ground up, we handled every stage of design and fit-out, integrating custom joinery, flexible meeting zones, and modern finishes. Our approach focused on optimizing natural light, acoustic control, and functional zoning to support their agile working model. Despite tight timelines, the project was executed efficiently with minimal disruption.

## The Results

The newly transformed office is a true extension of Biznet Consulting's identity—contemporary, efficient, and people-centric. The layout balances open collaboration spaces with private zones, enabling seamless transitions between tasks and meetings. Customized branding, ergonomic furniture, and thoughtfully designed breakout areas contribute to an energizing and professional atmosphere. The result is a space that fosters innovation, boosts team engagement, and leaves a lasting impression on clients.





ACES

## Project Highlights

- 11,000 sqft head office
- Dubai Media City
- 80 working days
- Design strategy report

## The Brief

A Leading Specialized Engineering Company ACES, they offer a wide range of specialized engineering services including site and geotechnical investigation, materials technology and testing, quality control of projects, special studies, land and marine surveying, and chemical and environment testing.

ACES has offices across the Middle East region. ACES also undertakes projects in other countries including Azerbaijan, Tanzania, Turkey, Kuwait, Iraq, Angola, Djibouti, and Morocco, among others. In 2022, ACES expanded its geographic footprint to the Dubai and whitemonde did the interior design and fitout work.

## What We Did

Since moving to their present Head Office back in 2023, they have enjoyed an incredible period of growth, reaching the Times with increasing more productivity in workspace.

Staff growth coupled with acquisitions meant that their workplace was not succeeding in a number of important areas, such as brand portrayal, groupings and overall capacity.

Aces were retained to carry out a series of Workplace Consultancy activities which included workshops and space appraisals. These findings then generated 'the design brief', establishing a number of key success factors to be achieved.

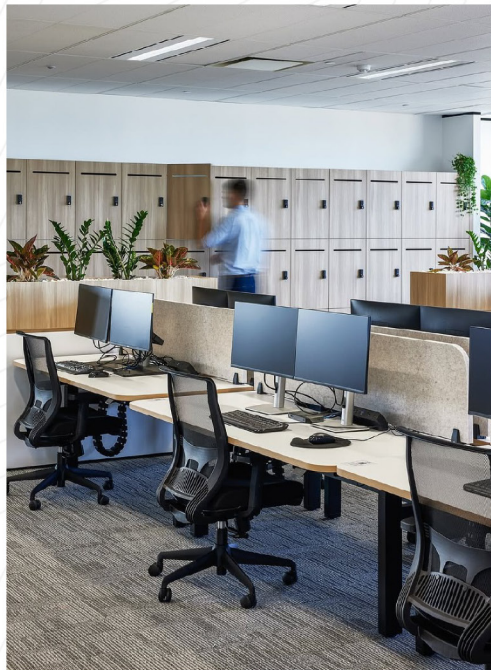
The brief allowed us to develop concept space plans, 3D visuals and detailed budgets. These succeeded in illustrating how the 1 storey, 3,000 sqft building could deliver a much more dynamic and varied workplace to support their future plans.

We then commenced an intensive 48 working days 'multi-phased' refurbishment project, whilst allowing over 150 staff to remain in occupation at all stages of the build.

## The Results

Ace's new workplace supports flexible work styles in a space designed for focus, productivity, and collaboration. Their brand identity is seamlessly integrated through colors and design. The environment not only reflects their culture and workflow but also allows room for future growth and innovation.





**Australian Children's Education  
& Care Quality Authority**

**Project  
Highlights**

- 9,200 sq ft
- Reception & meeting zones
- Open-plan workstations
- Integrated café-style pantry
- Focus pods & lockers
- Completed in 76 working days



**The Brief**

The Australian Children's Education & Care Quality Authority (ACECQA) sought to redesign its workplace into a modern, functional environment that reflects the organization's values of professionalism, trust, and support. The goal was to create a balanced space that offers a welcoming reception area, efficient work zones, and relaxed collaborative spaces—supporting both staff productivity and visitor experience.

**What We Did**

We delivered a comprehensive fit-out focused on clarity, flow, and wellbeing. The reception area was designed with warm timber textures and greenery to provide a calm and professional first impression. Private glass-partitioned meeting rooms offer both openness and acoustic control, while the open workspace supports team interaction with ergonomic furniture and clean sightlines.

We also introduced a café-style pantry area with casual seating, enhancing the social fabric of the workplace. Storage solutions, including integrated lockers, promote organization without clutter. Every detail—from lighting and materials to spatial planning—was intentionally selected to reflect ACECQA's commitment to quality and care in every aspect of their work environment.

**The Results**

The completed space is a cohesive reflection of ACECQA's identity—thoughtful, organized, and people-focused. Staff now benefit from a workplace that supports collaboration and concentration in equal measure. The new design enhances team comfort, improves daily workflow, and provides a professional, welcoming atmosphere for both internal teams and external guests.





## Project Highlights

- 10,000 sq ft
- Open workspace with natural lighting
- Integrated kitchen & breakout area
- Informal lounge and meeting points
- Curved layout with soft finishes
- Completed in 90 working days

## The Brief

Vertex Group (Name Used for Demo Presentation Only) required a refined, people-oriented workspace to support hybrid workflows and a growing team. The focus was on delivering a warm, modern, and open office design that encourages both collaboration and quiet productivity, while subtly reflecting the brand's values and attention to detail.

## What We Did

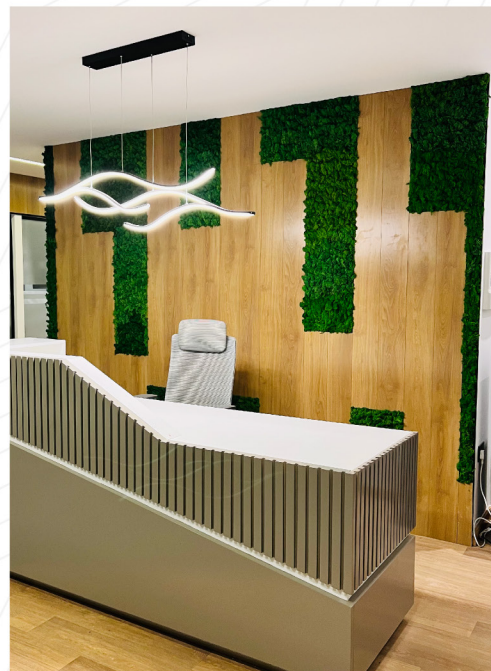
We developed a fluid and welcoming workspace centered around soft curves, neutral palettes, and warm textures. The central pantry and café-style dining zone double as informal meeting hubs, encouraging casual interaction throughout the day. Carefully selected furniture, including plush seating and rounded forms, creates an inviting and relaxed atmosphere across the breakout areas.

Open work zones were planned with flexibility in mind—supporting both teamwork and independent tasks. The spatial layout promotes natural light flow, while greenery and soft surfaces introduce calmness and balance. Rounded corners, timber flooring, and ambient lighting contribute to a smooth and cohesive spatial experience. Every detail was designed to elevate comfort, connectivity, and company culture.

## The Results

The finished space strikes a balance between functionality and comfort. With flexible work zones, inviting breakout areas, and thoughtful design details, the office now supports productivity, enhances team morale, and reflects a modern, people-first workplace. (Company name is used for demo purposes only.)





Alliance

## Project Highlights

- 8,900 sqft head office
- Sheikh Zayed Road
- 85 working days
- Design strategy report



## The Brief

Alliance Insurance is a leading international provider of professional services to clients in the global insurance market. The company has offices strategically placed around the world to be near their clients, and approached us to design and deliver a central Dubai office that would support their business goals and leave a lasting impression. Their previous Dubai headquarters were split across three different buildings, separating departments and preventing fluid work flow within the company. They wanted to blend the offices together into one, with no private offices and the opportunity for enhanced collaborative work.

## What We Did

For a project of this size we would usually plan 68 working days to complete; however, our team were dedicated to fulfilling Alliance Insurance request to have it finished in just 60th day. This meant detailed scheduling for both the design and build phases were paramount to a timely delivery. Both of these stages had to work in perfect synchronisation in order to surpass the usual speed of delivery. An initial workplace consultancy informed us that Alliance Insurance should introduce agile workspaces in order to attract both younger talent and older, more experienced employees.

## The Results

We have successfully created a workspace that allows Alliance Insurance to collaborate in an open plan environment. The space is divided into multi-functional areas behind an impressive front of house, with a meeting suite exclusive to clients. The main breakout area contains its own spot where employees can engage in the traditional coffee break. Not only has the new office merged the business but it has transformed the way Alliance insurance works entirely; it steps away from tradition and supports their ethos as a forward-thinking entity





## Dubai Hills Villa

### Project Highlights

- 5,400 sq ft private villa
- Fully furnished 4 BHK
- Custom TV lounge
- Modern kitchen & dining
- Skylight stair garden
- Delivered in 58 days

### The Brief

Dubai Hills Villa was envisioned as a warm, modern retreat for a family that values comfort, natural light, and clean design. The client wanted every room to feel personal and inviting, yet still fresh and open — a true reflection of refined residential luxury.

### What We Did

We approached the villa with a "light + texture" concept, layering neutral tones, natural wood, and soft ambient lighting. The living room was designed around a custom-built media wall, combining functionality and minimalism with subtle LED mood lighting.

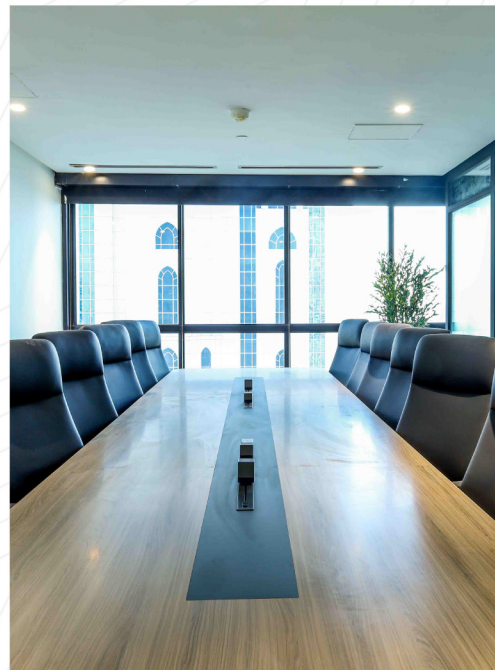
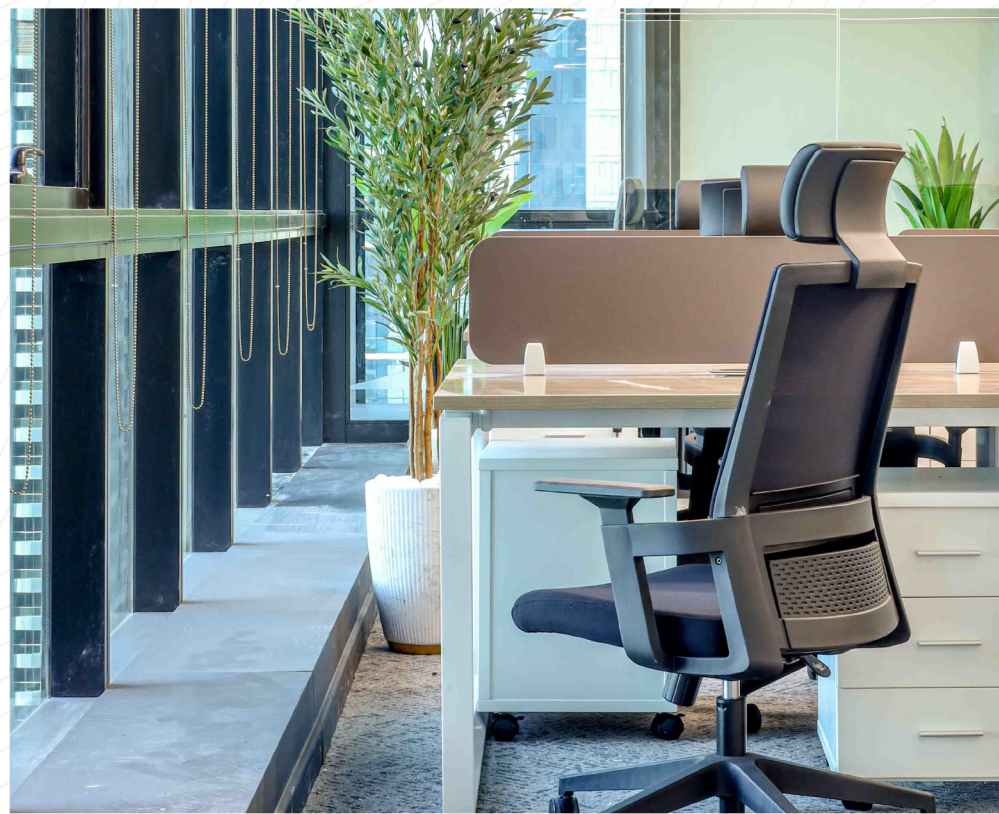
The bedrooms were styled with hotel-suite comfort in mind — upholstered headboards, ambient pendant lighting, and plush area rugs created a cozy yet luxurious feel. The open-plan kitchen and dining space adopted a Scandinavian flair with warm wood cabinetry, light stone surfaces, and tactile fabrics.

One of the standout elements of the villa is the airy staircase nook, transformed into a serene indoor garden lounge under a full skylight. It brings a dose of biophilic calm to the heart of the home.

### The Results

The final villa is an elegant yet comfortable living space that balances aesthetic sophistication with everyday livability. Natural light, layered materials, and thoughtful layout planning have turned this house into a personal sanctuary tailored for modern family life.





Confidential

## Project Highlights

- Minimalist corporate design
- Biophilic elements
- Ergonomic setup
- Custom lighting
- Smart space zoning

## The Brief

The client wanted a modern, minimalist office that promotes focus, collaboration, and wellness. Key priorities included integrating natural elements, optimizing natural light, and ensuring ergonomic comfort for the team.

## What We Did

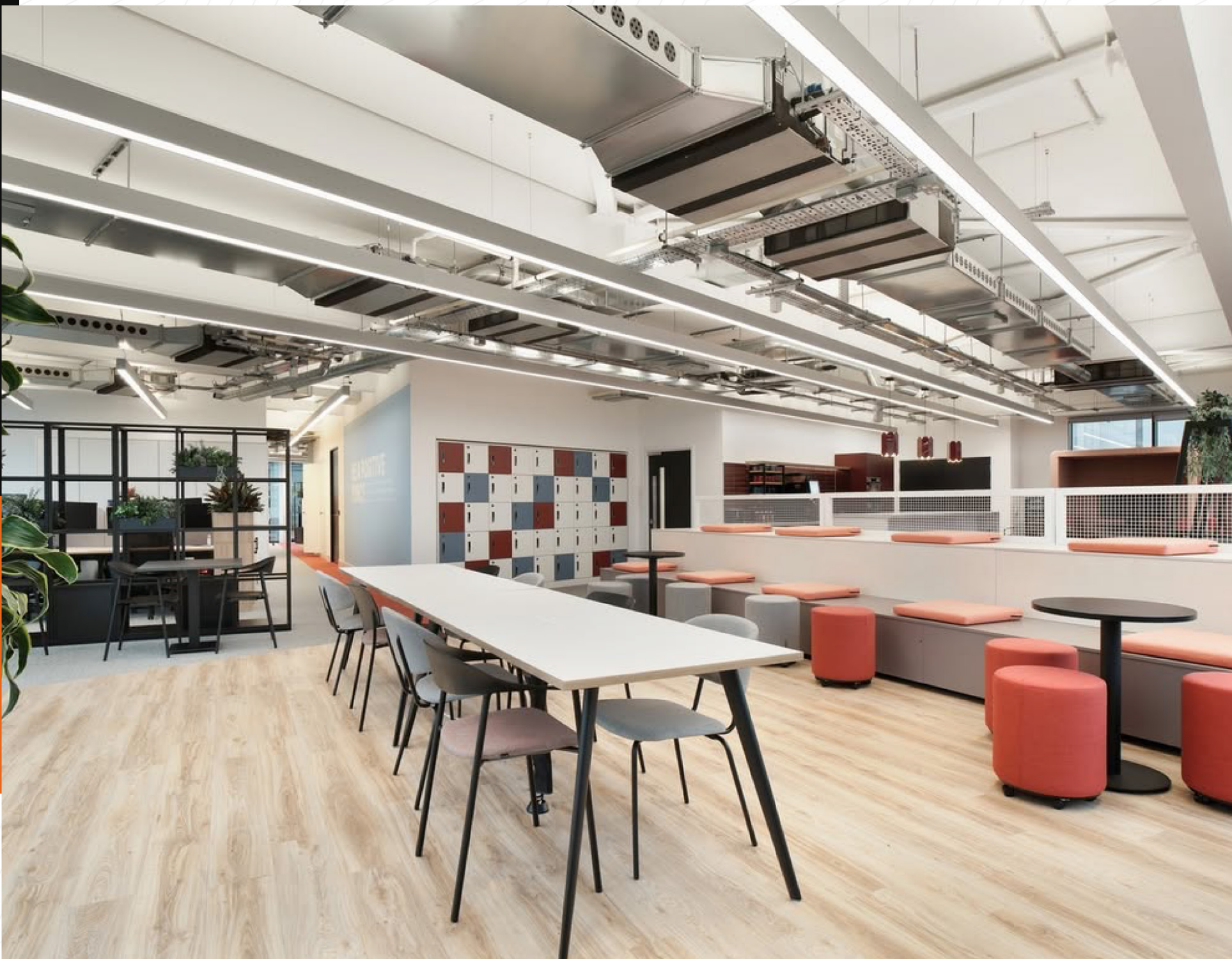
We designed a clean and functional layout emphasizing openness and simplicity. A combination of natural tones, matte textures, and biophilic accents gave the space an inviting, upscale character. The central workstation layout was paired with soft carpeted zones and built-in planters to provide warmth and separation without physical barriers.

We enhanced acoustics and ambiance through curved ceiling lighting and acoustic panels, balancing modern aesthetics with comfort. The boardroom was designed to impress—sleek finishes, panoramic views, and an executive table setup made it a professional yet welcoming space.

## The Results

The final space delivered a calm, confident atmosphere that supports focused work and executive collaboration. The client appreciated the blend of function and finesse, resulting in a workplace that uplifts team morale and aligns with the brand's refined image.





## Vigor Accounting

### Project Highlights

- Jbc-4, 2500 sqft
- JLT,
- MAZAYA BUSINESS AVENUE 2
- Project Completed - 2025
- 45 working days
- Impressive Client Entrance
- Premium Finishes
- New Meeting Room Suite



### The Brief

A growing accountancy firm, specialising in the entertainment industry, needed a larger workplace to support their expanding team. Their goal was to create a modern environment with efficient work-spaces, a client-friendly entrance, a dedicated meeting suite, and a spacious breakout area for relaxation and socialising. The open-plan layout also required areas for collaboration, both formal and informal meetings, screening spaces, and a separate director suite.

### What We Did

Our designers created a compelling floor plan utilising the shape of the building to maximise the use of space. The director's area is positioned in a sharp corner providing natural light from all angles to improve wellbeing. The executive suite for client meetings features a bespoke joinery entrance way and all new, brand coloured furniture. The timber ceiling, soft furnishing and polished plaster walls create a warm welcome. The open plan space incorporates biophilic design throughout with circular collaboration tables that have trees within alongside freestanding and tabletop planters. open booths provide additional meeting spaces additionally to the internal meeting rooms found in the centre of the space. There's also a curtained off screening area for reviewing client content. The large breakout area and well-appointed kitchen provides the perfect place for the team to recharge, refuel and build relationships across teams.

### The Results

The team are thrilled with the outcome of their new workplace. They are now well equipped to work in the way that naturally works for them. The team have quickly adjusted to a more collaborative working style and attendance in the workplace is up.





## Islamic Center

### Project Highlights

- 5,350 sq ft
- Hudaiba Awards Building
- 50 Working days
- Client engagement spaces
- Feasibility study center
- Collaborative meeting
- Bespoke joinery

### The Brief

When we were approached to work on the interior fitout for the new Islamic Center, the client came to us with a sincere vision — to create a space that would feel peaceful, welcoming, and spiritually uplifting for everyone who walks through its doors. The goal wasn't just to design a beautiful place, but to build an environment where people could gather, reflect, learn, and pray. The center was to include a prayer hall, reception, ablution areas, classrooms for Quran study, and multipurpose rooms for community activities. Every part of the space needed to reflect the values of humility, clarity, and connection — both in spiritual and social terms.

### What We Did

From the beginning, we knew this project carried a deep sense of responsibility. Our design team focused on simplicity, elegance, and purpose. We used soft neutral tones, natural textures, and subtle Islamic geometric patterns to maintain a sense of serenity without overwhelming the space. In the prayer hall, we worked closely with the client to ensure correct Qibla direction, carpet alignment, and acoustics for clear audio during prayer and sermons. Custom-designed wooden mimbar (pulpit) and mihrab features were installed with traditional detailing, blending modern craftsmanship with heritage design. Lighting played a key role throughout the center — from natural daylight flowing into the halls, to warm indirect lighting in the prayer areas to maintain calmness. Classrooms and activity rooms were designed to be both functional and inspiring, with attention to comfort, cleanliness, and flexibility. Throughout the process, we kept close communication with the client team to ensure that every small detail — from signage to wall finishes — aligned with the center's vision and values.

### The Results

The Islamic Center is now a vibrant space for prayer, learning, and community. Its calm interiors, thoughtful design, and finishing touches are appreciated by all. This project unites faith, simplicity, and purpose welcoming a growing number of visitors daily.





## Four Communication

### Project Highlights

- 6,300 sq ft
- Dubai Media City
- Project completed - 2022
- 65 working days
- Client experience suite
- Flexible & agile workstations throughout
- Complex comms & data centre

### The Brief

Four Agency helps the best companies in the world to deliver, measure and protect their entertainment streaming services. Due to their ongoing success, they acquired an additional 6,000 sq ft within their current building at their Dubai head office in Media City. Whitemonde were appointed to design and fit the new and existing spaces. Our brief was to create a fresh, welcoming and collaborative workplace that tells the four agency story and celebrates their success stories. To support the growth and development of the existing team and attract and retain new team members.

### What We Did

Working in a workplace consultancy capacity our designers introduced fundamental changes to the existing layout of the workplace to create a better workflow, utilising the full potential of the space. The new space plan includes collaboration areas, meeting pods, meeting rooms, booths and hot desks distributed throughout the open plan, focused work areas.

There is a purpose-built demo lounge for the four communication team to invite their potential clients in for experience days. The breakout area is designed to offer space for the 50+ team to relax and refuel. It doubles as a screening room for four agency to watch their clients work. The four agency brand emanates the space through imagery of streaming icons and through the branded living moss wall.

A dedicated engineers open plan work area was developed with premium infrastructure delivered to each desk setting including high spec data and electrical supply. This required a high spec data centre and comm provision to support it.

### The Results

Four agency now have a modern, flexible and collaborative workplace that offers them opportunity to work in the ways they value. They are able to work collaboratively when appropriate and concentrate on focused work when needed.



# Testimonials



**Christine Atanacio**

[12 reviews](#)

★★★★★ 4 years ago

Easy to deal with especially Nisa who handled our project. They were very open to our requests.



**Jaber Al Harbi**

[1 review](#) · [1 photo](#)

★★★★★ 3 years ago

They are very high-end and very much professional, also they deliver what they promise. Thank you WHITEMONDE for the nice interior.



**shamseena kn**

[1 review](#)

★★★★★ a year ago

WhiteMonde interiors are among the best interior design companies in and did an amazing job in giving me the exact interiors that I was looking for in our studio. Thanks a lot to the entire teams.



**noora r**

[9 reviews](#) · [1 photo](#)

★★★★★ 2 years ago

White monde is amongst the best interior fit out companies in dubai who understand their client's needs and exceed their expectations. We were amazed by the stunning interiors of our jewelry shop! We are really happy with their service!



**FRED OMOLU**

[3 reviews](#)

★★★★★ 4 years ago

My experience with Whitemonde Interior Decor was simply splendid, their creative abilities and professionalism is second to none.

I will recommend their services to any individual or organization looking for unique interior decor.

Fred



**shahrukh shams**

[6 reviews](#) · [7 photos](#)

★★★★★ Edited 5 years ago

One of the best interior design and fitout company in dubai

Positive  
Punctuality, Quality



**Ziyadali mohamed**

[Local Guide](#) · [21 reviews](#) · [9 photos](#)

★★★★★ 4 years ago

First of all thank you so much. I searched a lot of option on all available platform for a right interior fit-out service. I loved your works when I went through your website. Always come up with the most wonderful ideas, still dont know how you manage it all in short amount of time. Transformed our workspace totally into future. My management loves it all. My colleagues loves it all. I certainly can say you are the best in what you do.



**Familia Paunescu**

[7 reviews](#) · [2 photos](#)

★★★★★ 2 years ago

Exceptional collaboration on a very complex interior renovation & redecoration project of 3 offices in Warba Center Deira.

The project duration was 3 months, it was delivered on time despite the fact that we included in the scope of the project several requirements that were not in the initial scope. The end result exceeded our expectations, the quality of the materials used was very good and the team demonstrated flexibility, they were very serious and reliable.



**Osman Shahali**

[2 reviews](#)

★★★★★ a year ago

Fantastic encounter with Whitemonde Interiors! From start to finish, they outdid themselves. Expert team, gorgeous designs, and seamless execution. Our space is now a blend of style and utility.



**Abdullah Assani**

[Local Guide](#) · [42 reviews](#) · [22 photos](#)

★★★★★ 4 years ago

Outstanding quality of work. Team was on time and budget very good contractor to work with for our office project and result was exactly what we wanted.

Abdullah Assani



**aysha samia**

[1 review](#)

★★★★★ 2 years ago

"I would like to thank the team of whitemonde for being a lifesaver for our office renovation. We were looking for a professional interior design company in business bay when we found them. They have the best team and great work ethics! Highly recommend their services to anyone looking for renovation. "



**Adonai Elsa**

[1 review](#)

★★★★★ 2 years ago

White monde is a really nice company to work with. It is no doubt one of the most innovative interior design companies in uae. Their team was helpful and informative throughout the process. They helped refurbish our Dubai office floor last year. We loved the outcome of their work so much that we are looking forward to hiring them for another project this year for our other branches in the UAE.



**Mayetta Ave**

[5 reviews](#) · [5 photos](#)

★★★★★ 2 years ago

We are so happy with our new office. Whitemonde delivered our expectations. The process was smooth, the communication was very clear from the start. The project team Mohamad & Nisa were very proactive. We give 100 NPS to the team for a job well done.



**Tommy Gunadi**

[1 review](#)

★★★★★ 8 months ago

Worked with Whitemonde was really satisfying, they are easy to communicate & cooperate with. Will use their services for the next time!



# Contact



ISO9001:2015 CERTIFIED  
QUALITY MANAGEMENT SYSTEMS

## Email Address

[sales@whitemonde.com](mailto:sales@whitemonde.com)  
[info@whitemonde.com](mailto:info@whitemonde.com)

## Phone No

+971 42 690 172  
+971 50 255 5786

## Office Address

Office 2706, Iris Bay Tower,  
Business Bay, Dubai, UAE

Discover More

