



وايت موندی تصمیسات داخلیه & تجهیزات

WhiteMonde

INTERIOR DESIGNS & FITOUTS



Office 1509, The Metropolis Tower,
Business Bay, DUBAI, UAE.



+971 4269 0172



+971 564168739



info@whitemonde.com



www.whitemonde.com

A photograph of a modern interior space, likely a lounge or office. In the foreground, there is a yellow sofa and a lamp with a striped shade. In the background, a large potted plant is visible, and a glass display case or window is seen. The overall atmosphere is warm and professional.

Contents

- Preface
- Corporate
- Our Responsibility
- Team Structure
- Process Chart
- Services
- Clients
- Our Works
- Contact



Preface



وايت موندی تصمیحات داخلی و تجهیزات
WhiteMonde
INTERIOR DESIGNS & FITOUTS

Preface

With a never-say-die spirit along with complete confidence in Dubai, the modern era's "land of opportunities"; we were convinced that we could strengthen our position in the market through our superior services and high level of customer satisfaction by:



- Transparency in approach

- Sharing our knowledge and expertise , at the same time learn from others - be open to new ideas and suggestions.

- Accepting mistakes gracefully, and taking appropriate and timely corrective measures.

- Remain committed prior and during a project, and most importantly during the post-completion period.

- Taking responsibility for the entire process.

- Understanding and accepting the philosophy that in the race for perfection there cannot be a finish line- there is always room for improvement..

"Our Basic approach remains the same, however our working model is customization with consideration across the board: in product, services, interior design proposals , and project management"...

We have achieved amazing results – having won and executed many prestigious projects for blue-chip corporates, signed dealership agreements with the world's most renowned manufacturers and above all, retained and expanded our most important asset – our human resources! All of this was only possible due to our adherence to the aforementioned policies... Policies we will continue to operate with, as long as we exist in business...



Corporate



WhiteMonde
Interior Decoration L.L.C

Corporate

Whitemonde Interiors is a multi-faceted interior fit-out and furnishing specialist in workspace design and creation.

Our team of consultants has in-depth knowledge and extensive experience on how a thoughtfully designed and finely executed workspace can help attract and retain the best talents, enhance your brand as well as substantially improve your overall business performance.



“At Whitemonde, we’re focused on creating offices that you can be proud of working in...”

Much of our success has stemmed from our ability to clearly understand our client’s business, their core competence and the team of people who work there.

From the onset of any project, our highly experienced workspace consultants will study your hierarchy, business and the space in the finest detail, in order to assess the way in which they work together. Before drawing any conclusions on how the project should be carried forward, they will probe your workflow, energy and efficiency levels, observe your clients and your corporate culture in general. Only then can they sit down with the architects/designers and the project team to plan the optimum solutions for you.

With over 50 completed projects in UAE, varying in sizes from 1,000sq ft to 15,000sq ft, we offer a comprehensive range of professional services that extends from – turnkey interior design, fit-out and furnishing solutions





Our Responsibility



WhiteMonde
Interior Decoration L.L.C

Our Responsibility

Health and Safety

Whitemonde Interiors understand and accept the paramount importance of health and safety of employees and all other personnel that are affected by the group's activity. Therefore Whitemonde Interiors is determined to establish a working culture in which the positive aspects of health and safety are encouraged and developed.

In order to achieve the same, we practice a strict safety regime, inclusive of the following:

1 Providing and maintaining plant and systems of work that are safe and without risk to health.

- Prompt use of hard hats, safety boots, hand-gloves, safety goggles and harnesses by all performing the relevant works.
- Strictly follow the safety rules on the usage of scaffoldings, ladders, power tools, etc.
- Always use fused plugs/sockets for power.

2 Ensuring safe use, handling, storage, and transport of articles and substances, and appropriate disposal of waste.

- Provide and maintain adequate quantity of fire extinguishers
- Proper allocation of storage space.
- Non-stacking of materials beyond a height of 150 cm.
- No-smoking in the offices/work-sites and site staff accommodation



Our Responsibility

3 Provide information, training and supervision as is necessary to achieve competency in their role.

- Annual product training with respect to the brands that we represent.
- Use of state-of-the art tools frpm internationally recognized corporate organization
- All Sites are assigned with a foreman and a site engineer

4 Ensure a safe working environment, with an appropriate level of welfare facilities.

- Adequate assignment of personnel based on the size and difficulty level of the task to be carried out.
- Avoid fatigue by ensuring that all personnel have adequate rest, as wellas recreational facilities.



Corporate Social Responsibility

We understand, accept and appreciate our responsibility to the society in which we are operating and humanity in general. In this respect, we already have a policy in place, which is inclusive of:

- Absolute transparency and clarity in all our dealings with all the stakeholders (clients, suppliers, sub-contractors and employees).
- Zero tolerance towards corruption in any form.
- Refuse to deal with organizations/persons who do not respect human rights.
- Cause minimum damage to the environment, by sustainabl business practices especially in the fit-out process.
- Always abide by the laws and regula- tions of the land
- Participate in charity activities, especially those sponsored by the public authorities.
- Constantly train, motivate and remind the employees about the safety regulations, including road safety/driving manners.
- No discrimination against race, gender, religion or nationality.
- Equal opportunity and respect to all employees.
- Provide and maintain the best possible work and living facilities to staff and workers

Our Responsibility

○ **Our values/work ethics**

- Trust and personal responsibility in all dealings.
- Work relentlessly towards every client's success.
- Match words with action, always.



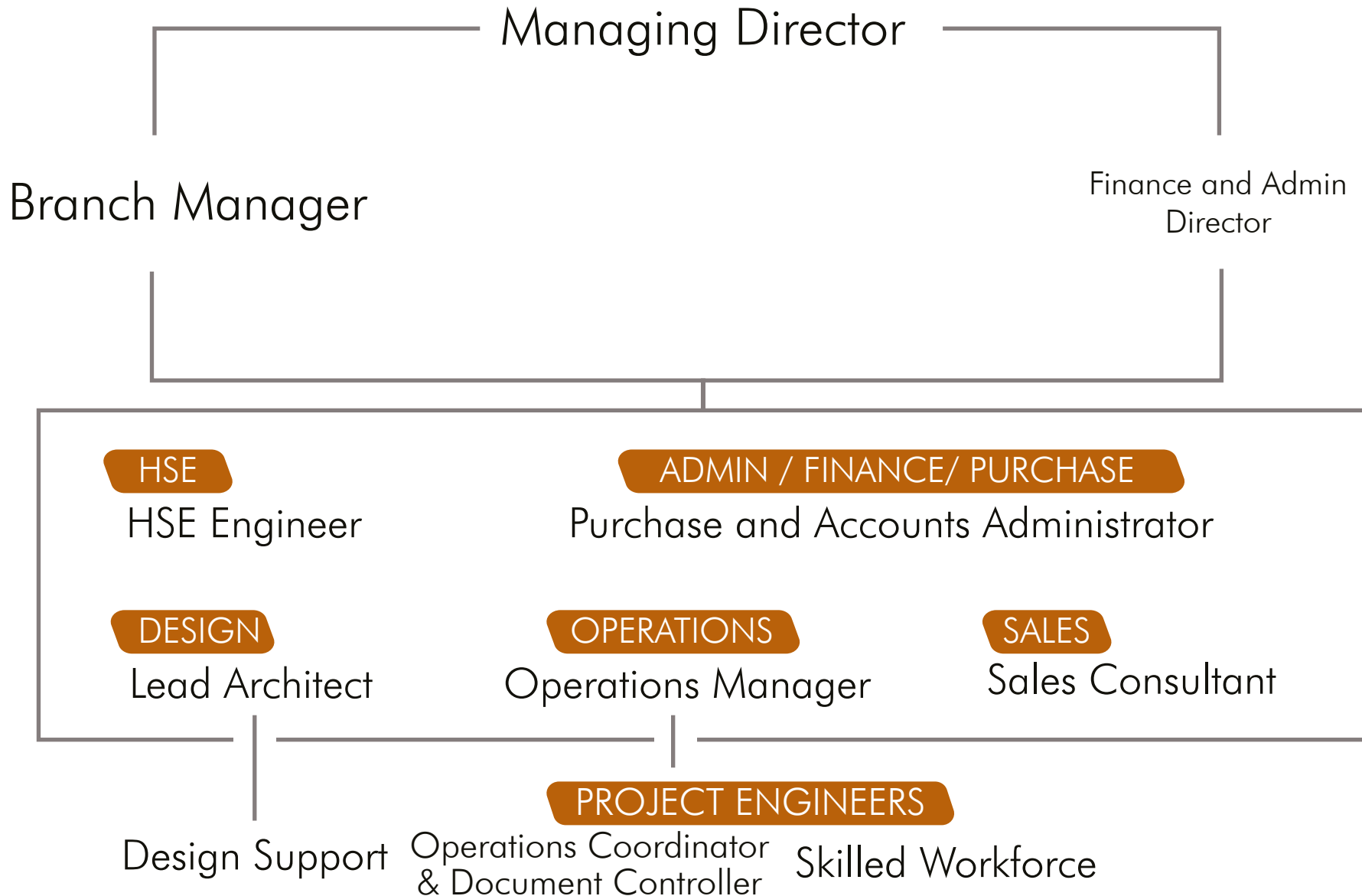


Team Structure



WhiteMonde
Interior Decoration L.L.C

Team Structure





Process Chart



WhiteMonde
Interior Decoration L.L.C

Process Chart

Transparency in the approach to work has been the key factor to our efficiency. This has been achieved by maintaining the chain of communication to a minimum. Therefore our clients will interact with only one person – **“Project consultant”**

“Clarity produces efficiency”

With this in mind, we feel that it is important that our clients understand the standard work- flow process at an early stage of the project to strengthen the communication.

Constant Client Interface

A

B

C

D

Preliminary

- Project Brief
- Concept Design
- Design and Cost Approval
- Develop Program

Pre-Construction

- Finishes and detailed drawing/render approval
- Preparation of technical drawings
- Statutory approval and documentation

Construction

- Site mobilization
- Execution of work
- Project completion
- Closeout formalities

Post-Construction

- As built and other documentation
- After sales registration



Our Services

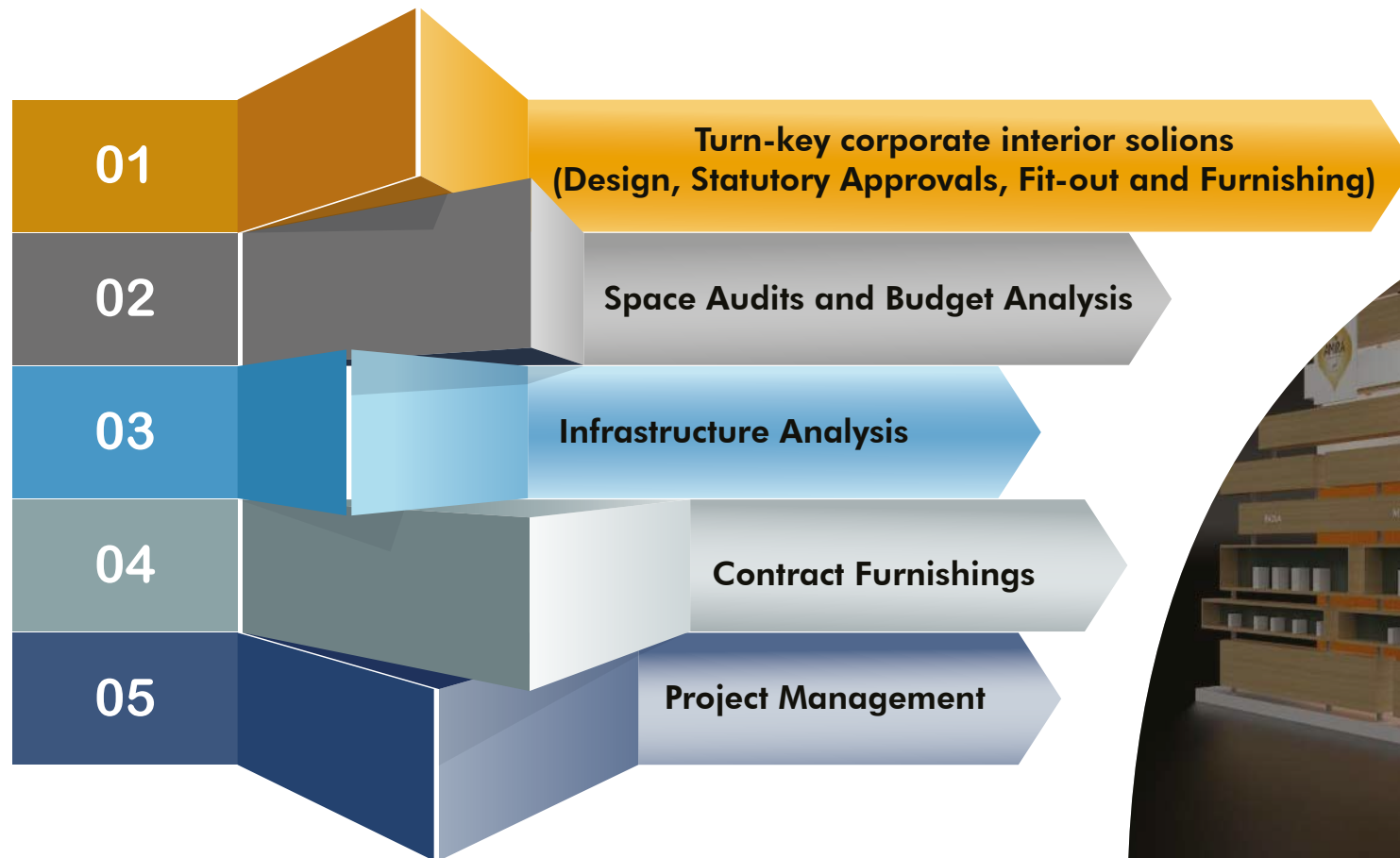


WhiteMonde
Interior Decoration L.L.C

Our Services

Our client portfolio is extensive and diverse, which demonstrates our ability to satisfy a vast range of needs and requirements. This statement is endorsed by the amount of repeat interior and refurbishment opportunities we obtain through clients references.

Our business has built an enviable reputation for delivering office interior fit outs on time; every time and all our delivery teams follow the company's ethos of being service driven. This ensures that our clients get the very best that the interior construction industry can offer.





Our Clients



WhiteMonde
Interior Decoration L.L.C

Our Clients



Our Clients



BUREAU
VERITAS

SpeedeX
SPEED - RELIABILITY - AFFORDABILITY



STALCO

zomato



SRG PROPERTIES LLC

COINTRAL
NEW SYSTEM

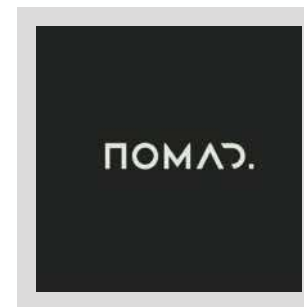
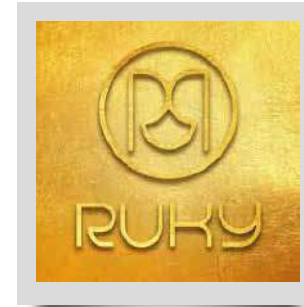


Phillip Futures

Bringing Global Markets Closer To You



Our Clients





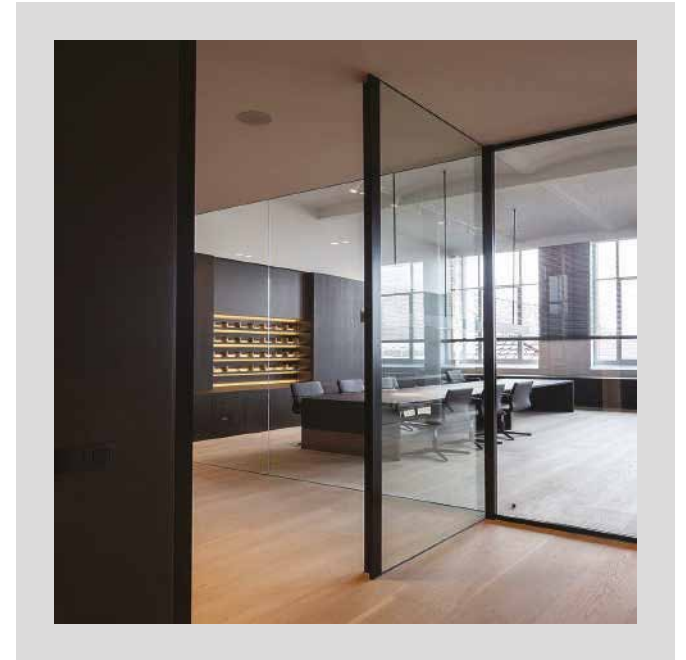
Our Works



WhiteMonde
Interior Decoration LLC

Our Works

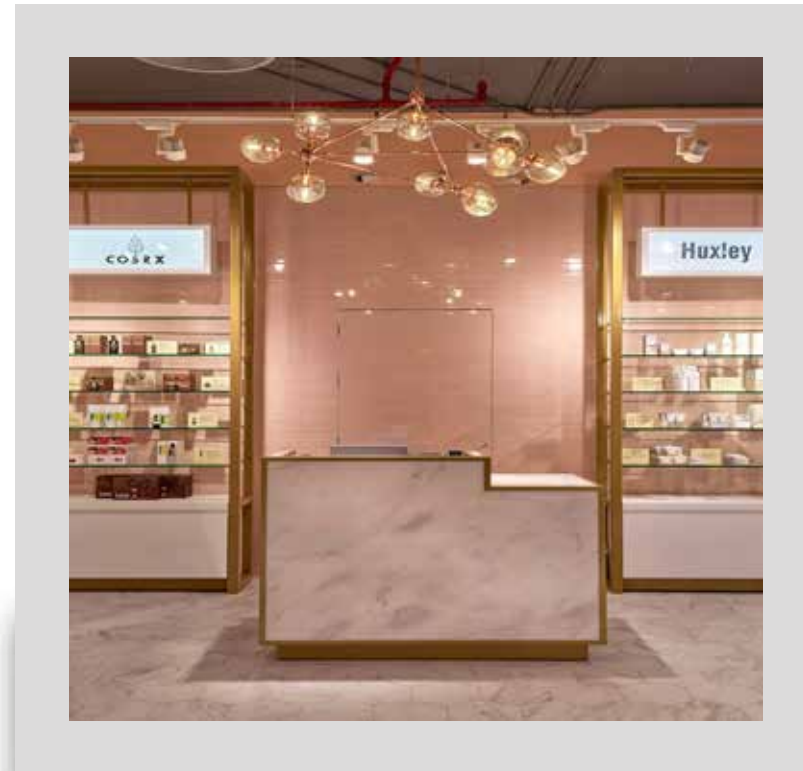
○ Zola Financers



 **Business Bay, Prism Tower, Dubai, UAE**

Our Works

Brand Shop- Jumeira



 **Jumeirah, Dubai, UAE**

Our Works

○ Duracell



Cluster O, JLT, Dubai, UAE

Our Works

○ — Al Farhan Al Salaam ●



📍 1st Floor, Tower , Al -aira Club Towers Dubai ,UAE

Our Works

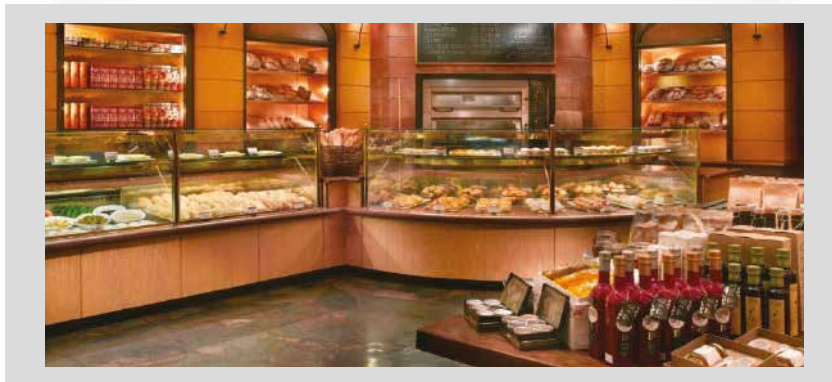
Liali Jewellery



 **Mirdif City Centre, Dubai, UAE**

Our Works

French Bakery



Al Ghurair Mall, Deira, Dubai, UAE

Our Works

KEYMAX Properties



 Prim Tower, Bussiness Bay, Dubai, UAE

Our Works

Kayal Grandeur



 Latifa Tower, Sheikh Zayed Road, Dubai, UAE

Our Works

○ Bureau Veritas ●



📍 Awards Building, Al Wasal, Dubai, UAE

Our Works

One Financials



 Saba Towers, JLT, Dubai ,UAE

Our Works

Smart Wellness




ART V Tower, Business Bay, Dubai ,UAE

Our Works

Learn and Fun





 **OFFICE 1509, THE METROPOLIS TOWER,
BUSINESS BAY, DUBAI, UAE.**



sales@whitemonde.com
info@whitemonde.com



+971 4269 0172



+971 564168739